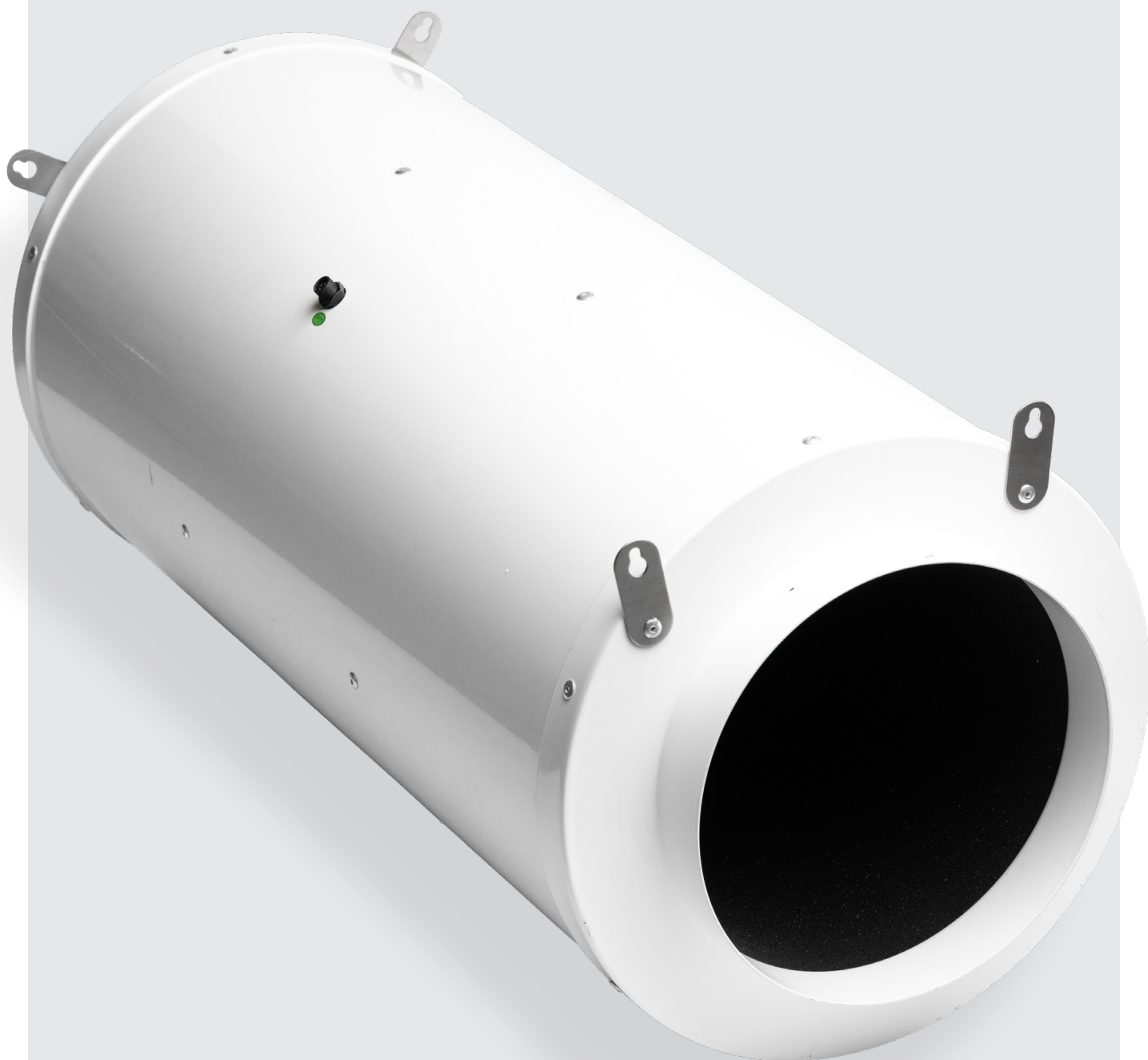


JETFLOW SILENT SJMF-S

Inline Mixed Flow Circular Fan

ELTA

>> **Select** models available for next day delivery



JETFLOW SILENT SJMF-S

Product Overview

- 4 standard sizes from 150mm to 315mm
- Air volume flow rates up to 0.794 m³/s
- Static pressures up to 434 Pa
- Suitable for operating temperatures up to +60°C
- Acoustic design for low noise levels
- Low Specific Fan Powers
- Available in **EC**

Inline mixed flow circular fans with EC motors for low power consumption at high performance.

Construction

Manufactured with aluminium or cold rolled steel sheet, dependant on size.

Acoustic Enclosure

For reduced noise levels.

Motor

Brushless EC motors are fitted as standard. The IPX4 motor contains sealed for life heavy duty NWB bearings. All motors are suitable for use in ambient air conditions up to +60°C.

Impeller

A high efficiency jet design double mixed flow impeller integrated and directly driven by an EC motor.

Electrical Connection

Electrical connection via 1.5 metre Mains lead complete with BS1363-1 UK 3-pin plug BS1361 fuse 3A.

Control

Supplied suitable for fixed speed operation. A Detachable 5 metre lead with 3.5mm jack connection to the unit is supplied for connection to a remote potentiometer, 0-10VDC or PWM Circuit.

Quality Management

Units are to be designed and manufactured with procedures as defined in BS EN ISO 9001.

Warranty

Each SJMF-S has a 24 month warranty.

Typical Applications

- Schools
- Colleges
- Shops
- Retail Parks
- Commercial
- Hotels
- Restaurants
- Cafes
- Cafeterias
- Pubs
- Offices
- General HVAC



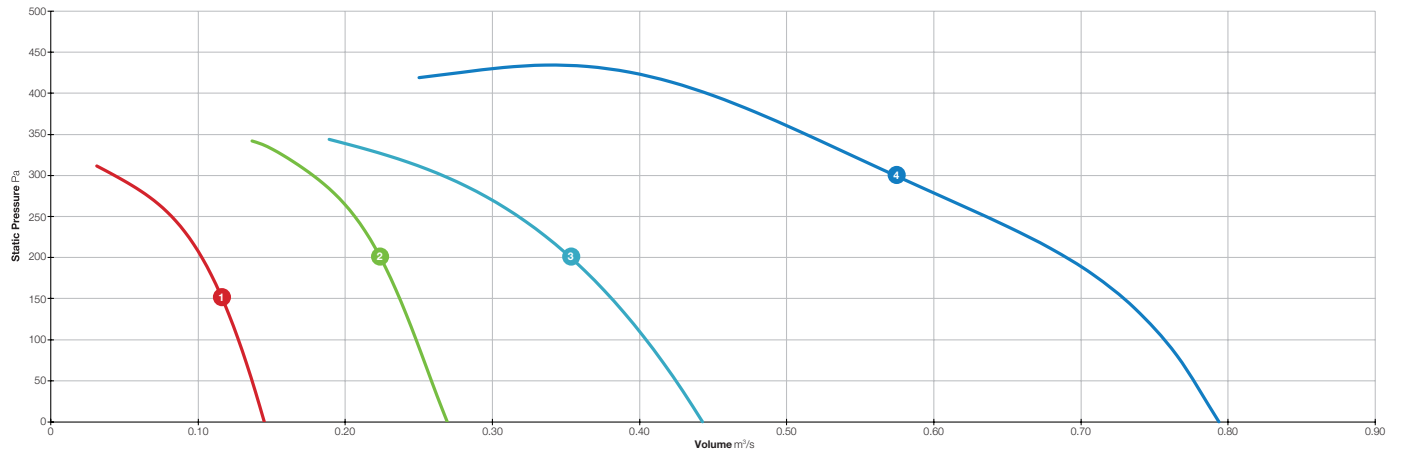
Contents

Page	Information
3	Performance Range Curves
4	Performance, SFP & Electrical Data
5	Sound Data
6	Dimensional Data
8	Accessories

JETFLOW SILENT SJMF-S



Performance Range Curves



- 1 SJMF150-S
- 2 SJMF200-S
- 3 SJMF250-S

- 4 SJMF315-S

JETFLOW SILENT SJMF-S



Performance, SFP & Electrical Data

Single Phase 220V to 240V / 50Hz or 60Hz

Product Code	Control Voltage V	Speed r/min	Airflow SFP	Airflow m³/s @ Static Pressure Pa												At Best Efficiency Point		Electrical Data	dBA @ 3m	
				0	25	50	75	100	150	200	250	300	35	400	Overall Eff %	Input kW	Peak Amps			
SJMF150-S	10	4900	m³/s	0.145	0.140	0.136	0.132	0.127	0.116	0.102	0.082	0.043			53.6	0.050	0.39	Inlet	40	
			W/(L/s)	0.28	0.30	0.32	0.34	0.37	0.42	0.49	0.60	0.96						Outlet	40	
	7.5	4245	m³/s	0.123	0.118	0.113	0.107	0.101	0.086	0.058	-	-	-		45.1	0.032	0.31	Inlet	38	
			W/(L/s)	0.21	0.23	0.25	0.27	0.30	0.37	0.51	-	-	-					Outlet	38	
	5	3195	m³/s	0.092	0.085	0.077	0.067	0.054	-	-	-	-	-		45.8	0.015	0.13	Inlet	32	
			W/(L/s)	0.14	0.16	0.19	0.23	0.28	-	-	-	-	-					Outlet	33	
			m³/s	0.092	0.085	0.077	0.067	0.054	-	-	-	-		45.8	0.015	0.13	Breakout	19		
			W/(L/s)	0.14	0.16	0.19	0.23	0.28	-	-	-	-	-					Breakout	19	
SJMF200-S	10	3730	m³/s	0.269	0.263	0.258	0.253	0.248	0.237	0.223	0.206	0.178			67.4	0.099	0.77	Inlet	40	
			W/(L/s)	0.26	0.28	0.30	0.32	0.34	0.38	0.42	0.48	0.56						Outlet	42	
	7.5	3205	m³/s	0.231	0.224	0.216	0.209	0.202	0.187	0.168	-	-	-		57.0	0.065	0.60	Inlet	38	
			W/(L/s)	0.19	0.21	0.23	0.25	0.27	0.32	0.38	-	-	-					Outlet	40	
	5	2495	m³/s	0.177	0.168	0.160	0.150	0.138	-	-	-	-	-		64.9	0.030	0.24	Inlet	33	
			W/(L/s)	0.13	0.14	0.16	0.18	0.21	-	-	-	-	-					Outlet	34	
			m³/s	0.177	0.168	0.160	0.150	0.138	-	-	-	-	-		64.9	0.030	0.24	Breakout	20	
			W/(L/s)	0.13	0.14	0.16	0.18	0.21	-	-	-	-	-					Breakout	20	
SJMF250-S	10	3190	m³/s	0.442	0.434	0.424	0.414	0.404	0.381	0.353	0.317	0.265			60.9	0.164	1.24	Inlet	44	
			W/(L/s)	0.29	0.31	0.33	0.35	0.36	0.41	0.46	0.52	0.61						Outlet	48	
	7.5	2700	m³/s	0.377	0.366	0.354	0.341	0.326	0.293	0.247	-	-	-		53.7	0.099	0.95	Inlet	42	
			W/(L/s)	0.21	0.23	0.25	0.27	0.29	0.34	0.40	-	-	-					Outlet	44	
	5	2000	m³/s	0.279	0.264	0.246	0.225	0.196	-	-	-	-	-		59.7	0.043	0.34	Inlet	36	
			W/(L/s)	0.13	0.14	0.16	0.19	0.22	-	-	-	-	-					Outlet	36	
			m³/s	0.279	0.264	0.246	0.225	0.196	-	-	-	-	-		59.7	0.043	0.34	Breakout	21	
			W/(L/s)	0.13	0.14	0.16	0.19	0.22	-	-	-	-	-					Breakout	21	
SJMF315-S	10	2970	m³/s	0.793	0.786	0.777	0.767	0.756	0.729	0.690	0.635	0.573	0.513	0.445	55.8	0.386	2.73	Inlet	56	
			W/(L/s)	0.36	0.38	0.40	0.42	0.45	0.49	0.54	0.60	0.67	0.75	0.86					Outlet	56
	7.5	2580	m³/s	0.684	0.675	0.664	0.652	0.638	0.595	0.527	0.458	0.384	-	-	56.9	0.247	1.79	Inlet	53	
			W/(L/s)	0.28	0.30	0.32	0.34	0.36	0.41	0.47	0.54	0.64	-	-					Outlet	53
	5	1945	m³/s	0.514	0.501	0.483	0.455	0.415	0.329	-	-	-	-	-	57.7	0.106	0.79	Inlet	47	
			W/(L/s)	0.16	0.18	0.20	0.22	0.25	0.32	-	-	-	-	-					Outlet	47
			m³/s	0.514	0.501	0.483	0.455	0.415	0.329	-	-	-	-	-	57.7	0.106	0.79	Breakout	27	
			W/(L/s)	0.16	0.18	0.20	0.22	0.25	0.32	-	-	-	-	-					Breakout	27

Data provided is at standard air density of 1.2 kg/m³.

ERP data in accordance with Regulation (EU) 1253/2014. Product category is NRVU. Measurement category used to determine energy efficiency: D.

A variable speed drive is integrated within the fan.

Peak Amps @ 230V / 1PH / 50Hz.

The overall A-weighted sound pressure level is at a distance of 3m with spherical free-field propagation. It is expressed in dB re-20µPa and is presented for comparative purposes only.

Breakout levels are calculated from the tested inlet and outlet sound power levels using the ASHRAE breakout sound transmission calculation procedure.

Suitable for operation from 2V control signal. For performance, refer to our selection software.

JETFLOW SILENT SJMF-S



Sound Data

Single Phase 220V to 240V / 50Hz or 60Hz

Product Code	Control Voltage V	Speed r/min		Sound Power Level dBW @ Octave Band Hz								Total dB
				63Hz	125Hz	250Hz	500Hz	1kHz	2kHz	4kHz	8kHz	
SJMF150-S	10	4900	Inlet	43	47	51	56	50	51	54	55	61
			Outlet	49	49	54	59	53	51	50	53	63
			Breakout	20	14	17	25	27	36	38	43	45
	7.5	4245	Inlet	45	45	48	52	47	48	50	53	60
			Outlet	49	47	51	57	50	48	46	52	61
			Breakout	21	11	14	23	24	32	34	41	43
	5	3195	Inlet	40	40	45	46	41	43	43	51	54
			Outlet	49	42	49	52	44	42	40	51	57
			Breakout	20	7	11	18	18	27	27	40	40
SJMF200-S	10	3730	Inlet	54	52	54	57	48	52	56	52	63
			Outlet	52	55	56	62	51	53	54	52	65
			Breakout	27	20	20	29	26	38	41	41	45
	7.5	3205	Inlet	48	50	52	52	45	49	52	51	61
			Outlet	47	52	55	58	47	50	49	51	63
			Breakout	21	17	18	24	22	34	36	40	43
	5	2495	Inlet	48	48	50	45	40	45	44	51	57
			Outlet	47	49	54	51	41	45	41	51	58
			Breakout	21	14	17	17	17	30	28	40	41
SJMF250-S	10	3190	Inlet	66	59	61	63	55	56	58	54	70
			Outlet	66	61	63	69	56	57	58	57	72
			Breakout	40	26	27	36	33	42	44	45	50
	7.5	2700	Inlet	52	57	61	59	51	52	54	52	67
			Outlet	54	58	63	61	51	53	54	53	68
			Breakout	27	24	27	30	28	38	40	42	47
	5	2000	Inlet	49	52	58	52	45	48	46	51	61
			Outlet	52	54	58	55	43	47	45	51	62
			Breakout	25	19	23	23	21	33	32	41	42
SJMF315-S	10	2970	Inlet	82	82	79	73	67	70	67	63	86
			Outlet	81	82	78	73	70	69	66	63	86
			Breakout	56	49	44	43	47	56	53	53	61
	7.5	2580	Inlet	80	81	77	69	63	66	63	59	85
			Outlet	80	81	76	70	62	65	61	58	85
			Breakout	54	48	42	40	41	52	49	49	58
	5	1945	Inlet	74	73	70	65	56	58	55	50	78
			Outlet	75	78	69	64	56	56	53	49	80
			Breakout	49	43	35	35	34	43	41	40	52

Data provided at standard air density of 1.2 kg/m³.

Tests and preparation of the sound data have been carried out in accordance with BS 848 Part 2:1985 at 50% peak pressure.

The Sound Power Level Spectra are in dB re-1pW.

Breakout levels are calculated from the tested inlet and outlet sound power levels using the ASHRAE breakout sound transmission calculation procedure.

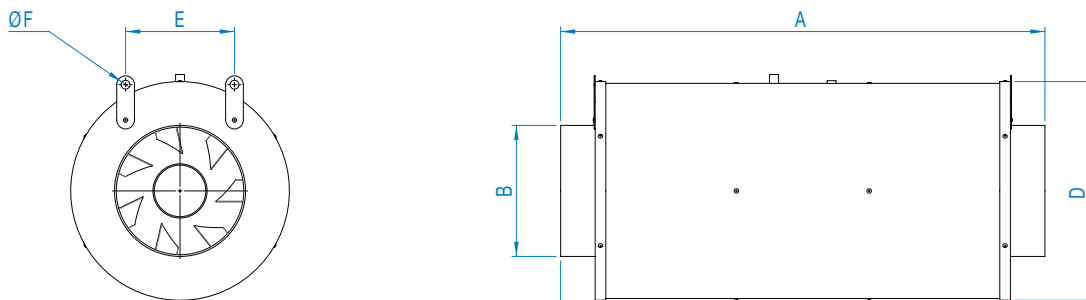
JETFLOW SILENT SJMF-S



Dimensional Data

Single Phase

Product Code	A	B	C	D	E	F	Weight kg
SJMF150-S	547	148	39	243	123	10	5
SJMF200-S	699	198	40	304	174	10	8
SJMF250-S	859	248	45	353	221	10	14
SJMF315-S	940	313	46	415	268	10	20



Dimensions are in mm.

JETFLOW SILENT SJMF-S



Accessories

Single Phase

Product Code	EC Electronic Controller	Fast Clamps (each)	Damper	Panel Filter	Electric Heater Battery	Wiring Diagram
SJMF150-S	149-POT-10-MI	018-150-CLAMP	018-150-DAMPER	018-0150-FILT-P	018-CV15-27-1M	152-553
SJMF200-S	149-POT-10-MI	018-200-CLAMP	018-200-DAMPER	018-0200-FILT-P	018-CV20-30-1M	152-553
SJMF250-S	149-POT-10-MI	018-250-CLAMP	018-250-DAMPER	018-0250-FILT-P	018-CV25-30-1M	152-553
SJMF315-S	149-POT-10-MI	018-315-CLAMP	018-315-DAMPER	018-0315-FILT-P	018-CV31-30-1M	152-553
					018-CV31-45-1M	
					018-CV31-901M	

Representeras av:



tel: 0470 - 485 50

mail: info@flaktcomp.se

www.flaktcomp.se

Tel **+44 (0) 1384 275800**

Email info@eltauk.co.uk

eltauk.com

SJMF-04-2023 Issue D



BS EN ISO 9001:2015 FM 556465

