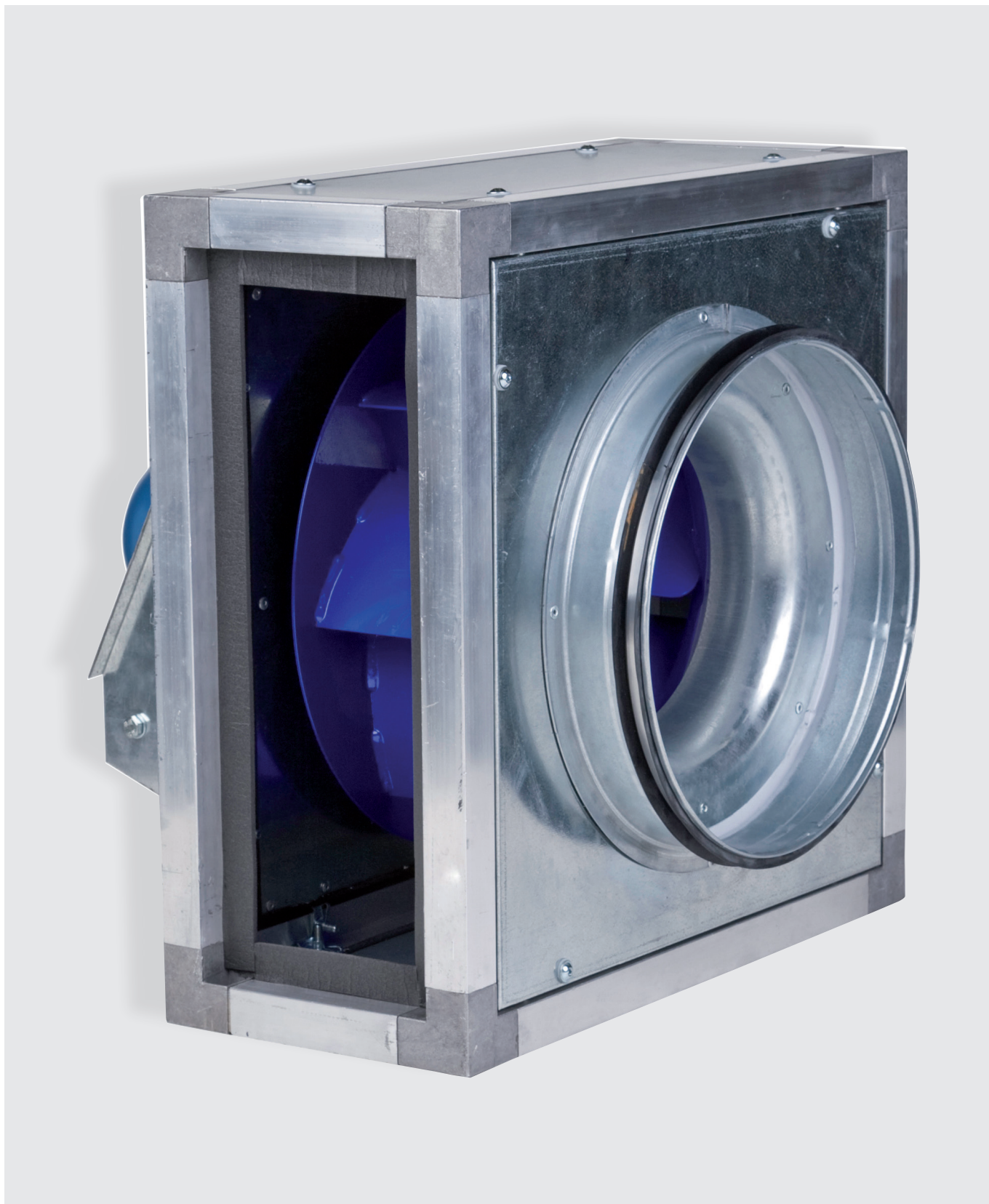


SLIM QUBE SSQUHT

Centrifugal Box Fan

ELTA

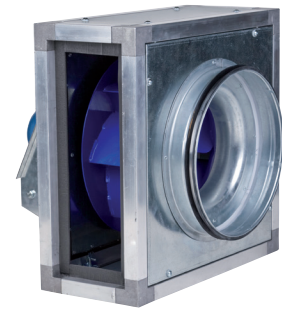
» **Select** models available for next day delivery



SLIM QUBE SSQUHT

Product Overview

- 6 standard sizes from 315mm to 710mm
- Air volume flow rates up to 5.216 m³/s
- Static pressures of up to 1390 Pa
- Suitable for operating temperatures of up to +120°C (in duct)
- Inverter speed controllable via 1Ph and 3Ph supply
- Available in **AC**



A multi-discharge, double skinned fan unit incorporating a high performance backward curved impeller. With the motor situated out of the airstream, it is suitable for more arduous and elevated temperature applications.

High Temperature

Motors are out of the air stream and are not effected by contaminants in the ventilated air. The range is suitable for various applications, from contaminated air to elevated temperatures up to +120°C.

Intelligent Design

Movable panels allow the outlet position to be altered on site to suit installation.

Low Noise

Units are constructed from double insulated panels filled with 25mm fibre glass acoustic insulation giving reduced noise levels.

Easy Maintenance

An easily removable motor/impeller assembly arrangement is ideal for frequent cleaning or maintenance.

Weather Resistance

Motor cover is available as an accessory to allow external mounting.

Controllability

The Elta Drive range of inverters has been designed encompassing the latest technology and combining robustness with reliability. Using an inverter to control fans via sensors to reduce fan speed can provide significant cost-savings through lower energy consumption.

Warranty

Each SSQU has a 12 month warranty.

Construction

Constructed from self supporting corrosion-resistant extruded Aluminium section, assembled with aluminium corners and 25mm thick double skinned removable panels, manufactured from pre-galvanised steel, in-filled with a non flammable mineral wool, 60kg/m³.

Motor

Three phase multi-voltage IP55 TEFC Foot / Flange mounted IEC frame motors, wound for either (Delta) 230V/3Ph/50Hz or (Star) at 400V/3Ph/50Hz connection, suitable for speed control when used with the Eltadrive VSD range of frequency inverter controls.

Impeller

A free running impeller with 7 backwards-curved blades made of sheet steel with surface protection provided by powder coating. The rotating, non-fluted diffuser generates high efficiency levels and favourable acoustic characteristics.

Typical Applications

- Kitchens
- Restaurants
- Schools
- Colleges
- Shops
- Shower Rooms
- Factories

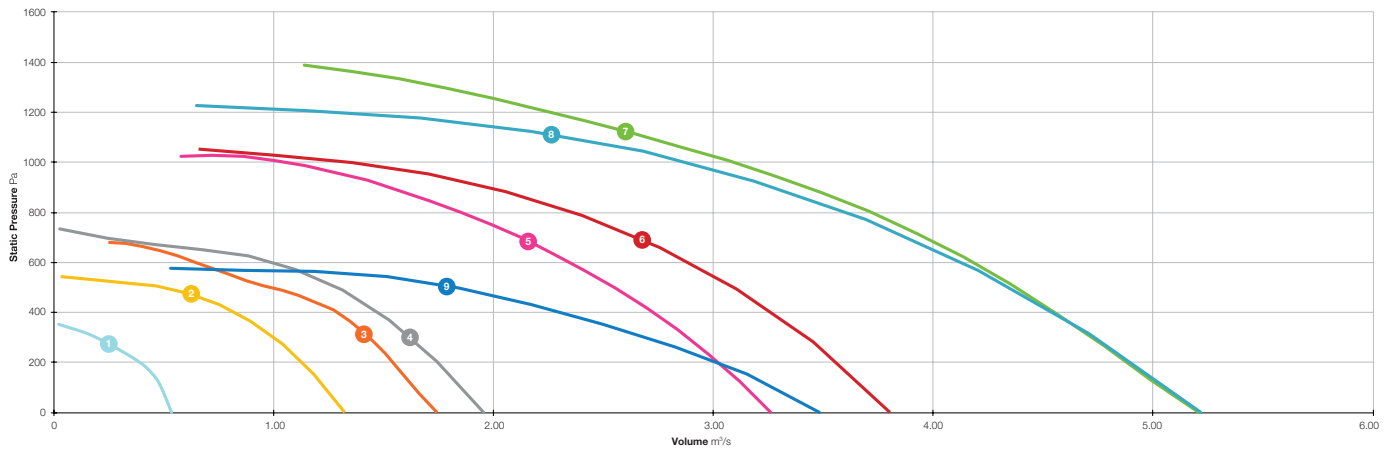
Contents

Page	Information
3	Performance Range Curves
4	Performance, SFP & Electrical Data
5	Sound Data
6	Dimensional Data
7	Accessories
18	Notes

SLIM QUBE SSQUHT



Performance Range Curves



- 1 SSQU1 / 4-3HT
- 2 SSQU2 / 4-3HT
- 3 SSQU22 / 4-3HT

- 4 SSQU3 / 4-3HT
- 5 SSQU23 / 4-3HT
- 6 SSQU4 / 4-3HT

- 7 SSQU24 / 4-3BHT
- 8 SSQU4 / 4-3BHT
- 9 SSQU4 / 6-3HT

SLIM QUBE SSQUHT



Performance, SFP & Electrical Data

Three Phase 380V to 415V / 50Hz

Product Code	Speed r/min	Airflow SFP	Airflow m³/s @ Static Pressure Pa									At Best Efficiency Point		Electrical Data			dBA @ 3m	
			0	100	200	300	400	500	750	1000	1250	Overall Eff %	Input kW	Peak Amps	FLC* Amps	FLC# Amps		
SSQU1/4-3HT	1431	m³/s	0.536	0.490	0.391	0.190	-	-	-	-	-	35.3	0.270	0.81	2.30	1.02	Inlet	46
		W/(L/s)	0.48	0.54	0.69	1.24	-	-	-	-	-						Outlet	45
SSQU2/4-3HT	1435	m³/s	1.326	1.235	1.130	1.001	0.828	0.496	-	-	-	56.2	0.550	1.42	5.30	2.05	Inlet	51
		W/(L/s)	0.39	0.46	0.55	0.66	0.80	1.18	-	-	-						Outlet	52
SSQU22/4-3HT	1470	m³/s	1.764	1.657	1.536	1.394	1.222	0.998	-	-	-	54.3	1.098	2.30	8.50	3.17	Inlet	60
		W/(L/s)	0.56	0.62	0.69	0.78	0.88	1.03	-	-	-						Outlet	62
SSQU23/4-3HT	1440	m³/s	3.280	3.158	3.022	2.878	2.717	2.540	1.973	0.941	-	56.4	2.806	5.50	-	7.50	Inlet	66
		W/(L/s)	0.83	0.89	0.95	1.01	1.09	1.17	1.46	2.33	-						Outlet	68
SSQU24/4-3BHT	1475	m³/s	5.195	5.046	4.889	4.723	4.547	4.359	3.819	3.119	2.033	59.5	5.559	9.82	-	10.40	Inlet	70
		W/(L/s)	0.87	0.94	1.01	1.08	1.16	1.24	1.47	1.77	2.30						Outlet	72
SSQU3/4-3HT	1463	m³/s	1.955	1.854	1.744	1.621	1.477	1.292	-	-	-	64.9	1.100	2.40	8.50	3.17	Inlet	56
		W/(L/s)	0.41	0.48	0.56	0.64	0.74	0.86	-	-	-						Outlet	56
SSQU4/4-3BHT	1441	m³/s	5.216	5.068	4.910	4.739	4.554	4.352	3.748	2.884	-	66.7	5.500	10.40	-	10.4	Inlet	70
		W/(L/s)	0.59	0.65	0.73	0.81	0.90	0.99	1.27	1.65	-						Outlet	72
SSQU4/4-3HT	1437	m³/s	3.802	3.689	3.564	3.425	3.269	3.092	2.518	1.339	-	67.2	3.000	6.50	-	6.2	Inlet	65
		W/(L/s)	0.57	0.63	0.70	0.78	0.86	0.95	1.22	1.85	-						Outlet	66
SSQU4/6-3HT	950	m³/s	3.482	3.286	3.026	2.694	2.307	1.832	-	-	-	62.4	1.500	3.90	7.60	2.8	Inlet	58
		W/(L/s)	0.37	0.44	0.52	0.62	0.74	0.89	-	-	-						Outlet	59

* FLC Amps at 230V / 1Ph / 50Hz input before a 1Ph to 3Ph Variable Speed Drive.

FLC Amps at 400V / 3Ph / 50Hz input before a 3Ph to 3Ph Variable Speed Drive.

Exempt from ErP of the European Parliament.

A variable speed drive (Eltadrive) must be installed with this fan.

Data provided is at standard air density of 1.2 kg/m³.

Peak Amps @ 400V / 3PH / 50Hz.

The overall A-weighted sound pressure level is at a distance of 3m with spherical free-field propagation. It is expressed in dB re-20µPa and is presented for comparative purposes only.

SLIM QUBE SSQUHT



Sound Data

Three Phase 380V to 415V / 50Hz

Product Code	Speed r/min		Sound Power Level dBW @ Octave Band Hz							Total dB	
			63Hz	125Hz	250Hz	500Hz	1kHz	2kHz	4kHz		8kHz
SSQU1/4-3HT	1431	Inlet	72	74	69	64	56	55	54	52	77
		Outlet	72	72	67	61	59	56	51	52	76
SSQU2/4-3HT	1435	Inlet	74	76	70	66	62	65	64	60	79
		Outlet	81	76	70	68	68	65	63	59	83
SSQU22/4-3HT	1470	Inlet	72	76	80	79	76	71	67	62	85
		Outlet	74	78	82	81	78	73	69	64	87
SSQU23/4-3HT	1440	Inlet	78	82	86	85	81	77	73	68	91
		Outlet	80	84	88	87	83	79	75	70	93
SSQU24/4-3BHT	1475	Inlet	81	85	89	89	85	80	76	71	94
		Outlet	83	87	91	91	87	82	78	73	96
SSQU3/4-3HT	1463	Inlet	76	77	72	67	68	71	69	65	81
		Outlet	79	76	71	70	72	70	68	64	82
SSQU4/4-3BHT	1441	Inlet	81	85	89	89	85	80	76	71	94
		Outlet	83	87	91	91	87	82	78	73	96
SSQU4/4-3HT	1437	Inlet	86	86	81	75	82	80	77	70	91
		Outlet	88	87	82	81	82	79	75	69	92
SSQU4/6-3HT	950	Inlet	82	85	76	72	75	71	66	62	88
		Outlet	83	82	76	78	74	71	66	61	87

Data provided at standard air density of 1.2 kg/m³.
 Tests and preparation of the sound data have been carried out in accordance with BS 848 Part 2:1985 at 50% peak pressure.
 The Sound Power Level Spectra are in dB re-1pW.

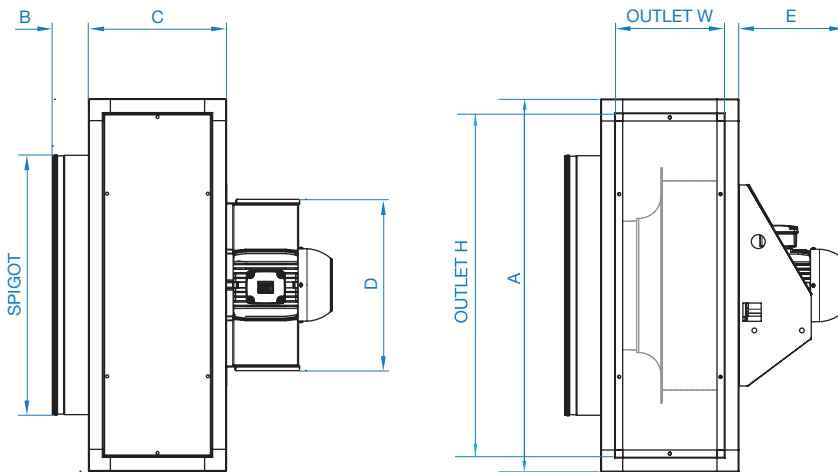
SLIM QUBE SSQUHT



Dimensional Data

Three Phase

Product Code	A	B	C	D	E	SPIGOT Ø	Outlet (W x H)	Weight kg
SSQU1/4-3HT	500	63	226	280	197	315	166 X 440	34
SSQU2/4-3HT	670	80	285	350	213	500	225 X 610	65
SSQU22/4-3HT	670	80	308	350	257	400	248 X 610	68
SSQU23/4-3HT	820	80	385	474	293	500	305 X 740	120
SSQU24/4-3HT	1020	99	426	474	389	630	346 X 940	182
SSQU3/4-3HT	820	80	323	350	257	560	243 X 740	89
SSQU4/4-3BHT	1020	99	426	474	389	710	346 X 940	180
SSQU4/4-3HT	1020	99	378	474	273	710	298 X 940	135
SSQU4/6-3HT	1020	99	426	474	273	710	345 X 940	147



Dimensions are in mm.

SLIM QUBE SSQUHT



Accessories

Three Phase

Product Code	Eltadrive Variable Speed Controller 1PH-3PH IP66	Eltadrive Variable Speed Controller 1PH-3PH IP20	Eltadrive Variable Speed Controller 3PH-3PH IP66	Eltadrive Variable Speed Controller 3PH-3PH IP20	External Roof	Flanged Silencer 1D Unpodded
SSQU1/4-3HT	149-ODE3-12037-1KB1Y	149-ODE3-12037-1KB12	149-ODE3-14037-3KA1Y	149-ODE3-14037-3KA12	039-SSQU-ER-A	068-0315-1DENP
SSQU2/4-3HT	149-ODE3-12075-1KB1Y	149-ODE3-12075-1KB12	149-ODE3-14075-3KA1Y	149-ODE3-14075-3KA12	039-SSQU-ER-B	068-0500-1DENP
SSQU22/4-3HT	149-ODE3-12150-1KB1Y	149-ODE3-12150-1KB12	149-ODE3-14150-3KA1Y	149-ODE3-14150-3KA12	039-SSQU-ER-C	068-0400-1DENP
SSQU23/4-3HT	-	-	149-ODE3-24400-3KA4Y	149-ODE3-24400-3KA42	039-SSQU-ER-D	068-0500-1DENP
SSQU24/4-3HT	-	-	149-ODE3-34055-3KA4Y	149-ODE3-34055-3KA42	039-SSQU-ER-E	068-0630-1DENP
SSQU3/4-3HT	149-ODE3-12150-1KB1Y	149-ODE3-12150-1KB12	149-ODE3-14150-3KA1Y	149-ODE3-14150-3KA12	039-SSQU-ER-C	068-0560-1DENP
SSQU4/4-3BHT	-	-	149-ODE3-34055-3KA4Y	149-ODE3-34055-3KA42	039-SSQU-ER-E	068-0710-1DENP
SSQU4/4-3HT	-	-	149-ODE3-24400-3KA4Y	149-ODE3-24400-3KA42	039-SSQU-ER-D	068-0710-1DENP
SSQU4/6-3HT	149-ODE3-22220-1KB4Y	149-ODE3-22220-1KB12	149-ODE3-24220-3KA4Y	149-ODE3-24220-3KA42	039-SSQU-ER-D	068-0710-1DENP

Product Code	Flanged Silencer 2D Unpodded	High Temperature Flexible Connectors (each)	Horizontal Weather Hood	TPO Transition Piece	Vertical Weather Hood	Wiring Diagram
SSQU1/4-3HT	068-0315-2DENP	063-0315-PU250	064-SSQU-WH-A	260-SSQU-TPO-A	064-SSQU-WHV-A	152-600
SSQU2/4-3HT	068-0500-2DENP	063-0500-PU250	064-SSQU-WH-B	260-SSQU-TPO-B	064-SSQU-WHV-B	152-600
SSQU22/4-3HT	068-0400-2DENP	063-0400-PU250	064-SSQU-WH-C	260-SSQU-TPO-C	064-SSQU-WHV-C	152-600
SSQU23/4-3HT	068-0500-2DENP	063-0500-PU250	064-SSQU-WH-E	260-SSQU-TPO-E	064-SSQU-WHV-E	152-600
SSQU24/4-3HT	068-0630-2DENP	063-0630-PU250	064-SSQU-WH-G	260-SSQU-TPO-H	064-SSQU-WHV-G	152-601
SSQU3/4-3HT	068-0560-2DENP	063-0560-PU250	064-SSQU-WH-D	260-SSQU-TPO-D	064-SSQU-WHV-D	152-600
SSQU4/4-3BHT	068-0710-2DENP	063-0710-PU250	064-SSQU-WH-G	260-SSQU-TPO-G	064-SSQU-WHV-G	152-601
SSQU4/4-3HT	068-0710-2DENP	063-0710-PU250	064-SSQU-WH-F	260-SSQU-TPO-F	064-SSQU-WHV-F	152-600
SSQU4/6-3HT	068-0710-2DENP	063-0710-PU250	064-SSQU-WH-G	260-SSQU-TPO-G	064-SSQU-WHV-G	152-600



Fan & inverter packages available.
Please contact Elta for more information.

Representeras av:



tel: 0470 - 485 50

mail: info@flaktcomp.se

www.flaktcomp.se

Tel **+44 (0) 1384 275800**

Email info@eltauk.com

eltauk.com

SSQUHT-07-2022 Issue C



BS EN ISO 9001:2015 FM 556465

